

Sharpen the Saw means preserving and enhancing the greatest asset you have...**YOU**... It means having a balanced program for self-renewal in your life... Without this renewal, the body becomes weak, the mind mechanical, the emotions raw, the spirit insensitive, and the person selfish.

Stephen R. Covey



*Much will be required of the person entrusted with much, and **still more will be demanded of the person entrusted with more.*** Luke 12:48

It is not sufficient, however, simply to have a “warm body”

filling a given role. **Those engaged in liturgical roles need to be well prepared for those roles** and to know

how to carry them out with reverence, dignity, and understanding.

2010, United States Conference of Catholic Bishops



*There are different kinds of spiritual gifts but the same Spirit; **there are different forms of service but the same Lord;** there are different workings but the same God who produces all of them in everyone. To each individual the manifestation of the Spirit is given for some benefit.* 1 Corinthians 12:4-7

Mary Hrich

440-854-6015

Mary@SustainingtheJourney.com

Bob Soeder

216-662-8685

Bob@SustainingtheJourney.com

Creators of the Sustaining the Journey series of workshops and events for Church Ministers and Liturgical Musicians

**Contact us for
Inspiration, Enthusiasm,
and Refreshment**



Workshops for:

Cantors ~ Choirs ~ Instrumentalists

Pastoral Staffs ~ Liturgical Ministers

Retreats ~ Days of Reflection

Concerts

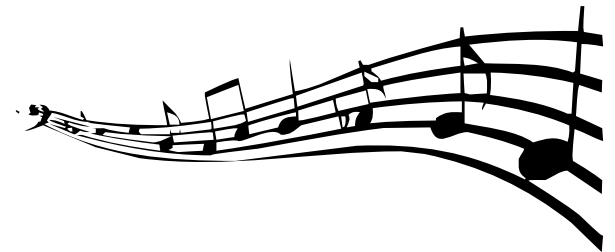
Evenings of Praise and Worship

www.SustainingtheJourney.com



**Creative, customized
Workshops
Retreats
Liturgical Music**

www.SustainingtheJourney.com





About the Presenters

Caring for the Care-Providers

Why attend?

Each workshop includes a light meal or dessert, and includes opportunities for inspiration, learning, sharing, Singing, stories, and prayer.

Come for the food - stay for the nourishment!

Bob Soeder

216-662-8685

Bob@SustainingtheJourney.com



*With a combined 70+ years of liturgical ministry in the Diocese of Cleveland, presenters **Bob Soeder** and **Mary Hrich** bring with them a wealth of experience, knowledge, and music.*

Recognizing the unique opportunities and responsibilities that church leaders face, Mary and Bob use their synergistic gifts to encourage, develop, and affirm attendees. We're all in this together!

*Customized to your specific needs, **Sustaining the Journey** will leave you with food for thought and a renewed enthusiasm for ministry.*

No matter the faith tradition, Church Ministers - both volunteer and paid professionals - are the lifeblood of the church. Ministry can be fulfilling and draining all at once. Church Ministers give countless hours of time serving others...but who takes care of their needs?

We all need to nurture our spirits, and **Sustaining the Journey** nourishes body and soul!

We've all attended mass at a different church, or with a visiting presider, and found it refreshing to hear a different perspective. **With Sustaining the Journey, attendees benefit from two voices - sharing one faith...and occasionally dueling pianos.**

Through stories and song, prayer and reflection, **Sustaining the Journey** events provide an opportunity for Church Musicians and Ministers to enjoy an evening of **renewal and refreshment**. Join with others who are passionate about caring for others and sharing their faith.

Recharge your batteries, let someone else do the planning for a change, and be inspired!

 **ALL Workshops have NO COST to register, but a FREE WILL OFFERING will be taken.**

Would your parish or organization like to host a Sustaining the Journey event?

Contact:

Mary Hrich (440-854-6015)

Mary@SustainingtheJourney.com

or

Bob Soeder (216-662-8685)

Bob@SustainingtheJourney.com



Mary Hrich

440-854-6015

Mary@SustainingtheJourney.com

www.SustainingtheJourney.com